

Customer :

customer

Customer part :

customer part

Comment :

Comment

S1=0.06

S2=0.7

Tmax=604

Tp S2=643.0

PI=0.08

HI=9

Sample =2928.7

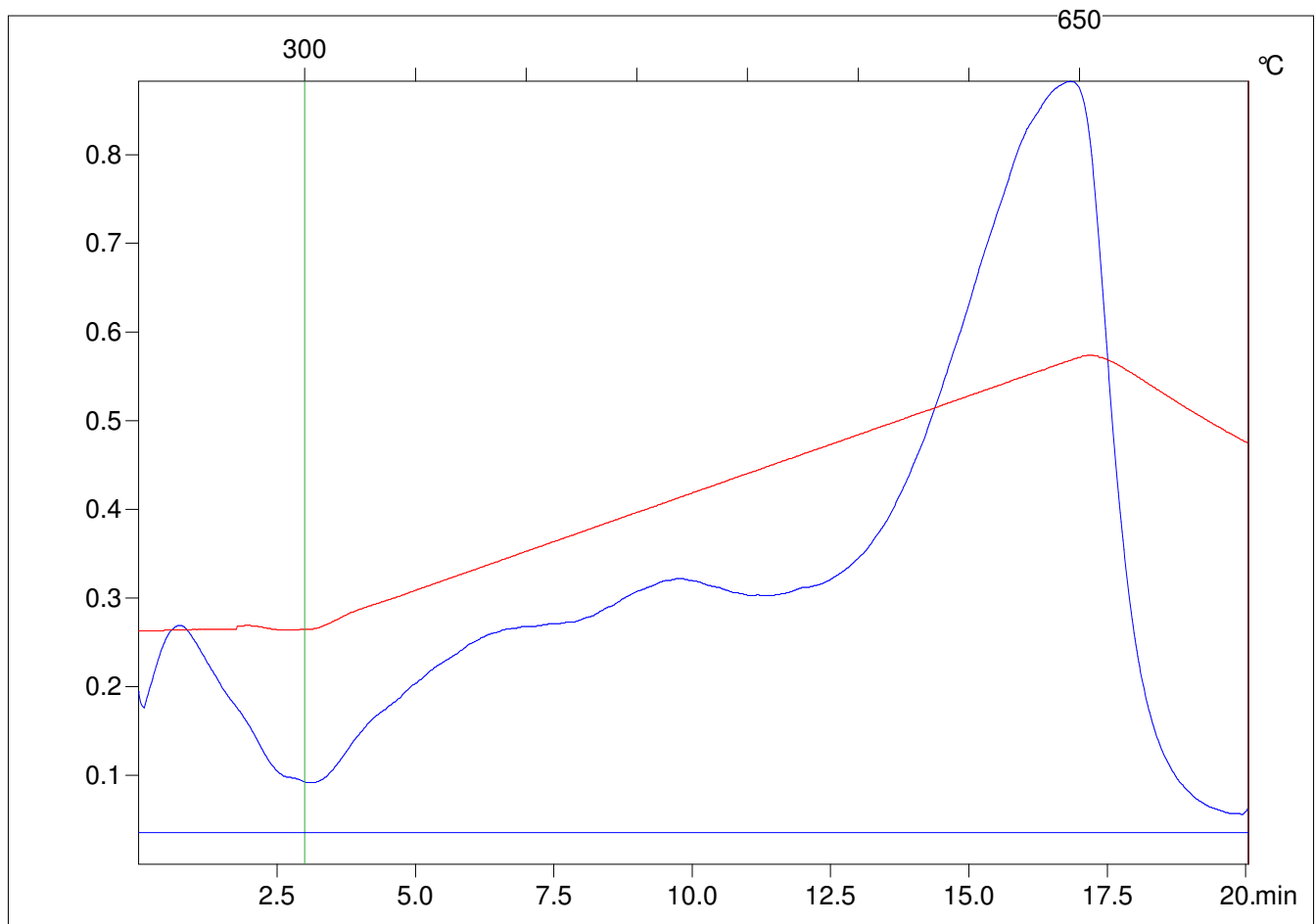
Method =Bulk Rock

Cycle=Basic

KFID(10\*9)=1550

Qty =70.2

TOC=8.13



C:\VINC\PK130315\PK028.R00 : FID pyrolysis graphic

State

Pyro Status

Oxi Status